

Part Number	G1314 --GRCURN082-002L13C20-OD
Power Configuration	Switched, Outlet Monitoring
Physical Configuration	16A, 230V, 3.6kW
	19 in / 483 mm Horizontal



Description	<p>The G1314 --GRCURN082-002L13C20-OD provides hands-on control remotely. While Monitored PDUs can display information remotely, this Switched unit offers the ability to use that information and stay in control of individual power outlets. The G1314 --GRCURN082-002L13C20-OD manages whatever issues arise with the click of a few buttons on a smart phone or computer. Also, disable problem equipment by cutting power to specific outlets, reboot equipment remotely by turning power on and off, and save time and money by avoiding sending live technicians to the source of the issue. In addition to its switching capabilities, the unit has outlet level power monitoring for granular power consumption data of all equipment. Finally, a Max Group Amps (MGA) feature offers an extra level of protection by preventing circuit overload by letting users set the threshold for maximum number of amps threshold settings.</p>
-------------	---

Racknet Enabled – The G1314 --GRCURN082-002L13C20-OD easily integrates with Racknet – Geist's DCIM software. Racknet (purchased separately) collects and reports critical power and environmental data for multiple PDUs in one, user configurable interface. Users gain immediate remote access to trends, alarms and histories of devices in the data center through a standard Web browser. Racknet saves both time and cost associated with managing each device individually. Contact your Geist rep for more details.

Product Summary	G1314 --GRCURN082-002L13C20-OD - Switched, Outlet Monitoring, + Environmental Monitoring -- 16A, 230V, Horizontal, (8) Locking IEC C13, C20, Power – Local/Remote + Environmental Ports, , Aggregate - Total Unit Monitoring, Outlet Monitoring (A, W, kWh) & Outlet Group Monitoring (V)
-----------------	---

Monitoring	Power – Local/Remote + Environmental Ports
------------	--

Plug Form	 C20
-----------	---

Receptacle	 Locking IEC C13 (Quantity: 8)
------------	---

## G1314 --GRCURN082-002L13C20-OD - Product Specification and Options

Monitoring	Power – Local/Remote + Environmental Ports
Monitoring Level 1	Aggregate – Total Unit Monitoring, Outlet Monitoring (A, W, kWh) & Outlet Group Monitoring (V)
Remote Power Management	Individual Outlet Switching with Optional User Defined Time Delays with Sequential Power-up
Quantity Of Inputs	1
Voltage	230V
Current	16A
VA per Input (Load Capacity)	3.6kW
Frequency	50/60 Hz
Over Current Protection	None
Switch	No
Indicators - LED(s)	8
Activity LED	1
Idle LED	1
Power LED	1
Scrolling Digital Display	Yes
Plug Type	IEC60320 C20 Power Inlet (cord sold separately)
Receptacle/Socket Type #1	Locking IEC C13
Quantity on Rear #1	8
Style #1	Individual
Maximum Output per Receptacle/Socket #1	10A
Voltage per Receptacle/Socket #1	230V
Internal RMS Voltage Sensor	Yes
Internal RMS Current Sensor	Yes
Network Connection	Ethernet via RJ45
Network Protocols Supported and Data Access Formats	HTTP, HTTPS (SSL/TLS), SMTP/POP3, Telnet, DHCP, ICMP, TCP/IP, HTML (Desktop & Mobile), SNMP v1/v2c/v3, XML, CSV
Reboot Button	Yes
Remote Sensor RJ Connection Jacks	2
RSD - Optional Remote Display Jack	Yes
Heavy Steel -Black Powder Coat	Yes
Configuration	1U
Adjustable Mount Brackets	Yes
Product Warranty	Three Year
Certification/Agency Approvals	CE Marked
Certification/Agency Approvals	China RoHS
Certification/Agency Approvals	Complies with EN 55022 and EN 55024
Certification/Agency Approvals	Complies with IEC 60950-1 (CB Certificate Available)
Certification/Agency Approvals	C-Tick Marked
Certification/Agency Approvals	RoHS Compliant
Chassis Dimensions (HxWxD)	44mm x 432mm x 216mm
Shipped Weight	10lbs (4.54kg)



## Managing Multiple Geist PDUs?

Customers who purchase G1314 --GRCURN082-002L13C20-OD select Geist's Racknet-Aggregator solution to proactively manage their Geist PDUs and environmental solutions.

### Racknet-A

Geist's PDU management solution, Racknet-A gives visibility to data collected by Geist power strips in one centralized location. Now you can manage power data at the rack level.

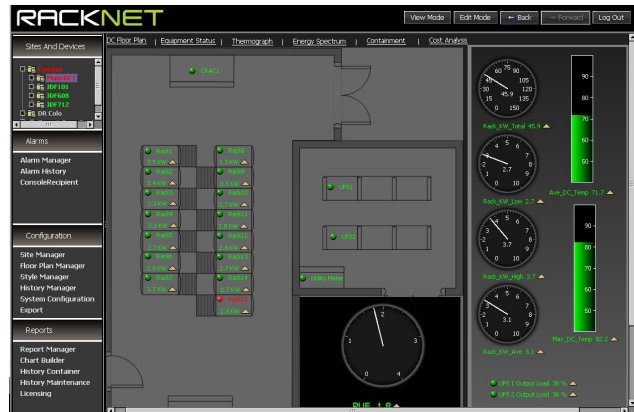
With Racknet-A you can:

- Consolidate the management of all Geist hardware into one, intuitive interface.
- Save space and associated costs on expensive network switches.
- Manage hundreds of devices or thousands of points through \*GNET.
- Collect and store data to examine trends and create reports.
- Set alarm notifications in one centralized location.
- Trend data and run reports on recorded points.

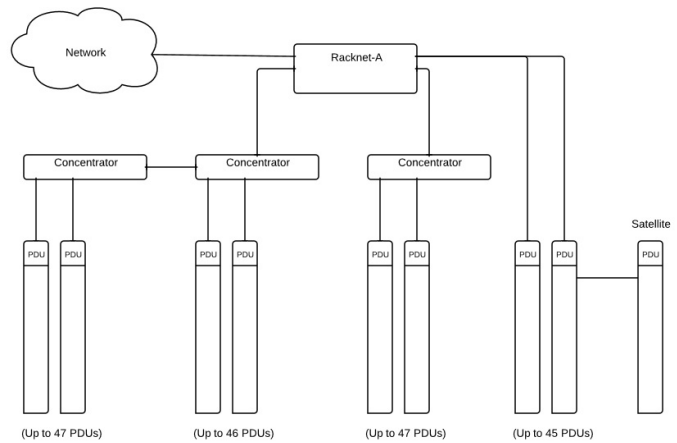
Complete your PDU purchase with the perfect centralized management tool.

### \*What is GNET?

GNET is the advanced network that brings various Geist devices together—using only one IP address.



Auto Discover Geist PDUs with Racknet



Racknet Connection Diagram

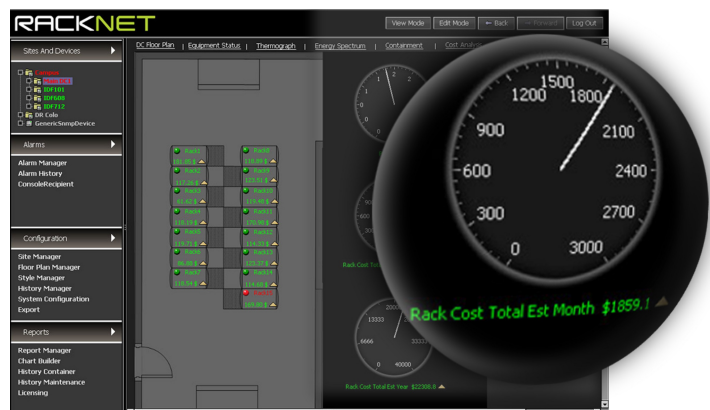
## Need to manage third-party equipment?

Try our vendor neutral Racknet products.

Both Racknet-S and Racknet-AS come with an expanded feature set that provide even more flexibility, reach, and control of your white space equipment. Each of these solutions support third-party devices and comes with full customization capabilities. Additional management tools help create meaningful data calculations and display key information in real-time.

For more information on Geist's Racknet solutions visit:

<http://www.geistglobal.com/products/manage>



Customers who purchase G1314 --GRCURN082-002L13C20-OD select integrated sensors to better monitor the environmental elements in their data center. These sensors connect directly to the Geist PDU and send data to Racknet or any web-enabled computer.

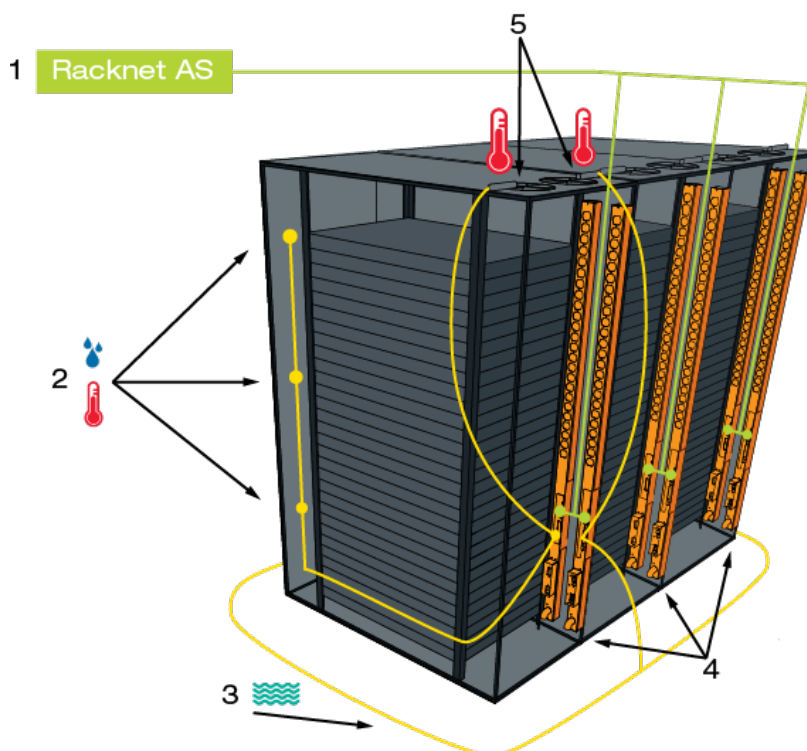
Integrated Sensors – Capture data on a broad range of environmental factors with Geist's complete line of digital and analog sensors. Sensors connect directly to Geist's intelligent PDUs and measure the following:

- Temperature, humidity, dewpoint and airflow
- Leak detection and water sensing
- Smoke
- Carbon monoxide
- Door position
- And more...

Visit <http://www.geistglobal.com/products/monitor> for all available sensor options.

## Application Diagram

1. Racknet AS – Collects data from specified equipment then stores, aggregates, reports, and displays the data on a secure internet connection for multiple user remote access. Captures data from up to 48 unique ethernet connections under a single IP address.
2. Temperature/Humidity/Dewpoint Sensors (GTHD) – Measure critical environmental elements and send data through intelligent PDU ports. The GTHD sensors shown can daisy chain similar units to create a sensor network.
3. Water Sensing Unit – Detects presence of water and reports information to the intelligent PDU.
4. Geist PDUs – Supplies power to critical data center equipment. In addition, the intelligent PDU sends performance metrics as well as data captured from environmental sensors to Racknet for collection.
5. Temperature and Airflow Sensors – Measure specific temperature and airflow at critical locations around the cabinet then sends data through intelligent PDU ports.



GT3HD Digital Temp, Humidity and Dewpoint Sensor – Daisy chain multiple sensors to measure the environmental factors throughout the cabinet.

Leak Detection Cable – Identify the presence of water over a large area to keep sensitive equipment protected from water damage.

### Geist Americas

1821 Yolande Ave  
Lincoln, NE 68521 USA  
1.800.432.3219 or  
1.402.474.3400  
[www.geistglobal.com](http://www.geistglobal.com)

### Geist Europe

Unit 1, The Monarch Centre,  
Venture Way,  
Priorswood, Taunton,  
Somerset, TA2 8DE UK  
+44 (0) 1823 275100  
[www.geisteurope.com](http://www.geisteurope.com)

### Geist Asia

China  
Tiley Plaza Bldg. A, Unit #2808,  
No. 199 Haide 3 Road,  
Nanshan Shenzhen,  
Guangdong Province, China.  
Postal Code: 518000  
Tel: +86.755.86639505  
[www.geistglobal.com](http://www.geistglobal.com)

### Geist Asia

Hong Kong  
Tel: +852 90361927  
Email: [salesasia@geistglobal.com](mailto:salesasia@geistglobal.com)