


Security and Environmental Monitoring Solutions

The NetBotz® product line offers an active monitoring solution designed to protect against physical threats, environmental or human, that can cause downtime or disruption to your IT infrastructure. This scalable suite of intelligent appliances, including sensors, access controls, and cameras is tailored for environments ranging in size from network closets to data centers.

APC



Schneider
 **Electric**

NetBotz® Security and Environmental Monitoring

NetBotz protection brings a crucial layer of physical security to any IT environment—big or small—by constantly monitoring and protecting your IT assets from environmental threats and human error. Being immediately aware of air conditioning failures, fires, leaking pipes, smoke, condensation, and other hazards gives you time to respond to problems before they become catastrophic—and when human error is a factor, recorded video clips show you exactly what happened. For environments that need to be kept up and running, the protection NetBotz appliances offer is both unique and invaluable. It's a flexible solution that can easily be expanded, modified, and customized to meet application requirements, and is the only integrated security and environmental monitoring solution.

With NetBotz Security and Environmental Monitoring, you get...

- Rack- or room-level environmental monitoring inside densely-packed racks or remote network closets for temperature, humidity, etc.
- Video surveillance clips on each aisle, working in conjunction with rack access alerts
- Leak monitoring wherever fluids can cause you harm.
- Third party sensor monitoring for chillers, generators, windows, chemical processes, etc.
- Compatibility with select IP Cameras from Pelco by Schneider Electric

The Peace of Mind You Need for Your IT Assets

How would you know if dust is building up inside a rack, if the cooling system is malfunctioning, or if it's getting too humid in the wiring closet? You could keep each location fully staffed, but that is costly and unrealistic for most businesses, and that still wouldn't protect you against human error.

Or, you could keep tabs on even the most remote environments from a single location—more efficiently than any IT technician ever could. Your best choice is to outfit your IT environment with NetBotz protection.

The system includes a monitoring appliance, environmental sensors, color camera, and integrated software that assesses the severity of threats and provides notification. InfraStruXure® Central is a central station platform (application) that can communicate with, configure, manage, archive, and provide trend analysis on data coming from hundreds of NetBotz appliances throughout a distributed enterprise. Users receive alarms and notification via e-mail, phone or pager, and in the form of text messages or video clips. In addition, third-party sensors support fuel level, glass break, gas detection, flow rate, pressure, etc.

Protect Your Network Closet

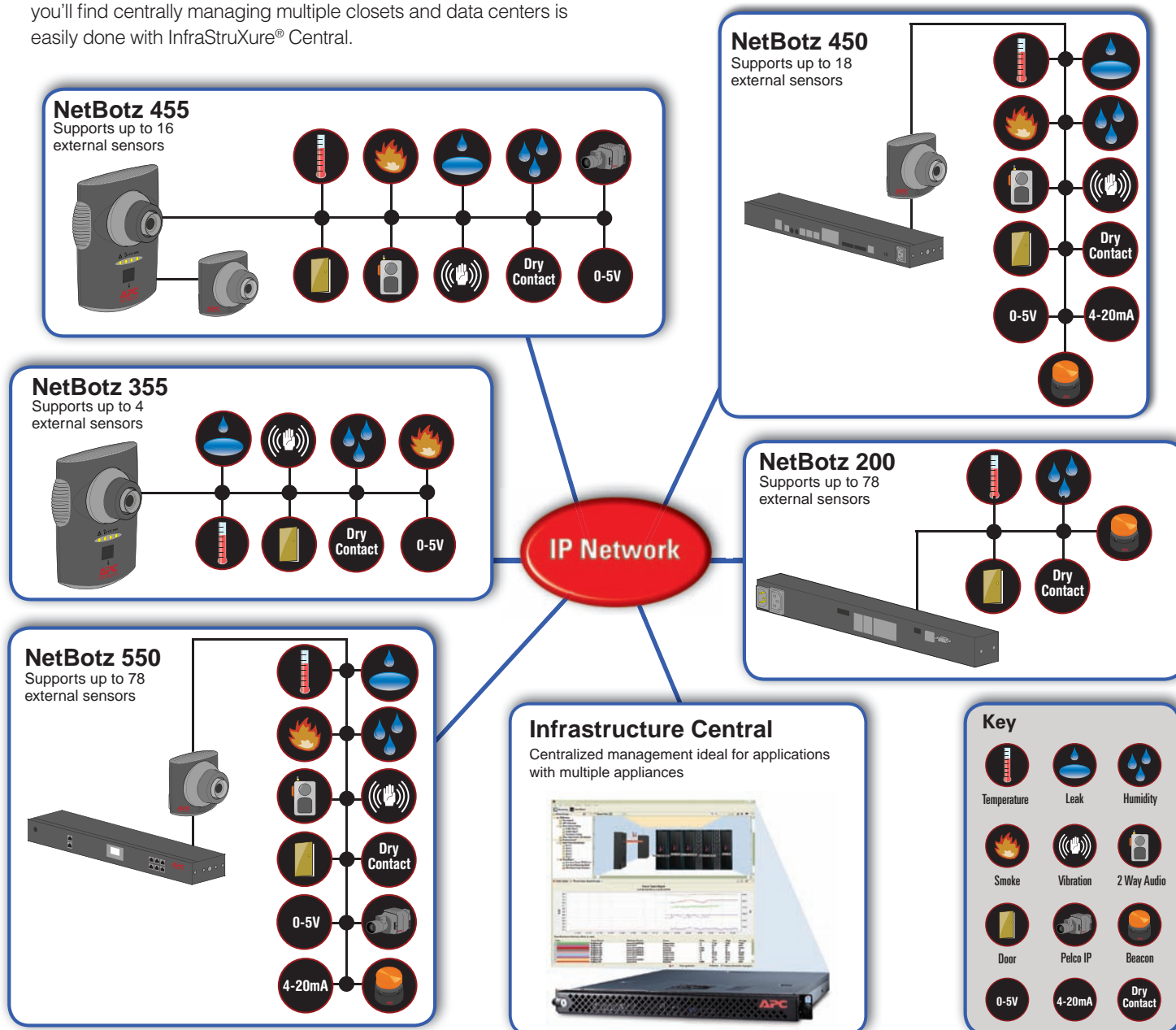
Today's network closets are denser than their predecessors, housing more mission-critical applications in a space that's remained less than optimal. Now more than ever, IT administrators need NetBotz® products to give them accurate room- and rack-level environmental monitoring for temperature, humidity, and other hazards inside the network closet.

NetBotz protection gives you total security through remote access control and video surveillance, and even sends you notification of unsecure racks and unauthorized personnel. Also, you'll find centrally managing multiple closets and data centers is easily done with InfraStruXure® Central.

Safeguarding the Data Center

NetBotz products deliver the protection your densely packed data center requires, giving you environmental monitoring at the rack level. Using daisy-chained expandable pods, you can also keep the per-rack monitoring cost to a minimum, while using the sensor data to contribute to trend analysis and planning.

The NetBotz equipment also gives you streamlined installation of pods through toolless mounting in racks, CAT5 sensor cabling, central management of multiple racks through InfraStruXure Central, and event correlation with video surveillance.



Security and Environmental Monitoring Appliances

NetBotz® Appliances

Wall-mount and rack-mount appliances protect your IT assets from environmental threats

- Environmental monitoring for temperature, humidity, dust, and other physical and environmental threats
- Protect against damage due to heat, humidity, water, smoke, dust, and more
- Various types of alert actions allow notifications to be sent to SNMP managers, e-mail systems, Web servers, phones, and pagers, among other options
- Monitoring leaks under raised flooring with a rope sensor
- Multiple thresholds for each sensor allows for notifications at the informational, warning and critical levels
- Aggregate multiple NetBotz video feeds into a single view with InfraStruXure Central Surveillance Licenses



Power over Ethernet (PoE) option reduces cabling to wall-mount appliances



Rack-mount appliances operate with external cameras and sensor pods to provide comprehensive data center monitoring.

NetBotz Access Control

Remote and local authentication for access to your rack enclosure

- Proximity card-enabled rack access system
- Audit trail allows for troubleshooting and compliance
- Access alarms based on remotely configurable settings
- Grant access to remote sites via the network
- Integrates with video on monitoring devices



Access control devices and NetBotz surveillance allow for event correlation



Security Cameras

Cameras that integrate with NetBotz 400 and 500

- Deploy multiple cameras to extend your supervision over an IT environment
- Create a visual record of who enters secure areas and what they do there
- Video audit trail available for analysis and compliance
- Capture video in response to motion, door opening, and more

NetBotz Sensors

Wide range of plug and play sensors for NetBotz appliances

- NetBotz Sensors include temperature, humidity, leak, smoke, vibration
- Supports a wide variety of third party sensors via dry contact, 4-20mA, 0-5V
- Deploy multiple sensors to extend your supervision over an IT environment

NetBotz Licenses

Expanded capabilities for enhanced remote management

- Sort and search recorded clips by many criteria
- Enhance the NetBotz embedded feature through 2-way audio, audio recording and playback, camera masking (block-out), digitally signed video recordings, IP filtering, extended location fields, unlimited user names, and six levels of administrative privileges.

NetBotz Accessories

Options to enhance NetBotz appliances

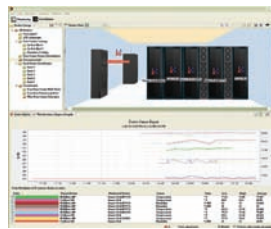
- Cables and mounting brackets allow for fast, easy installation of monitoring appliances into any environment.
- Power over Ethernet injectors allow for APC PoE capable devices to be powered through a CAT5 cable.
- NetBotz accessories are tested by APC for compatibility with all NetBotz products, saving you time in your installation.

Add more camera pods and sensors to create a solution that grows with your data center.

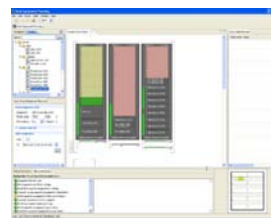


Completing your IT management picture

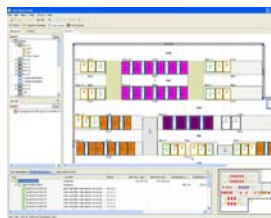
Designed to seamlessly integrate into your existing infrastructure, APC products fill in the blanks of your IT management puzzle. With the cooling solutions, management applications, and customer services to support any size IT environment, APC can't help you predict the unexpected—but we can help you prepare for it.



With InfraStruXure Central you get comprehensive, real-time monitoring and fault notification of your vendor-neutral power, cooling and environmental devices. The centralized repository can be accessed from anywhere on the network and it forms the consolidated platform for the Data Center Physical Infrastructure (DCPI) Management suite of applications.

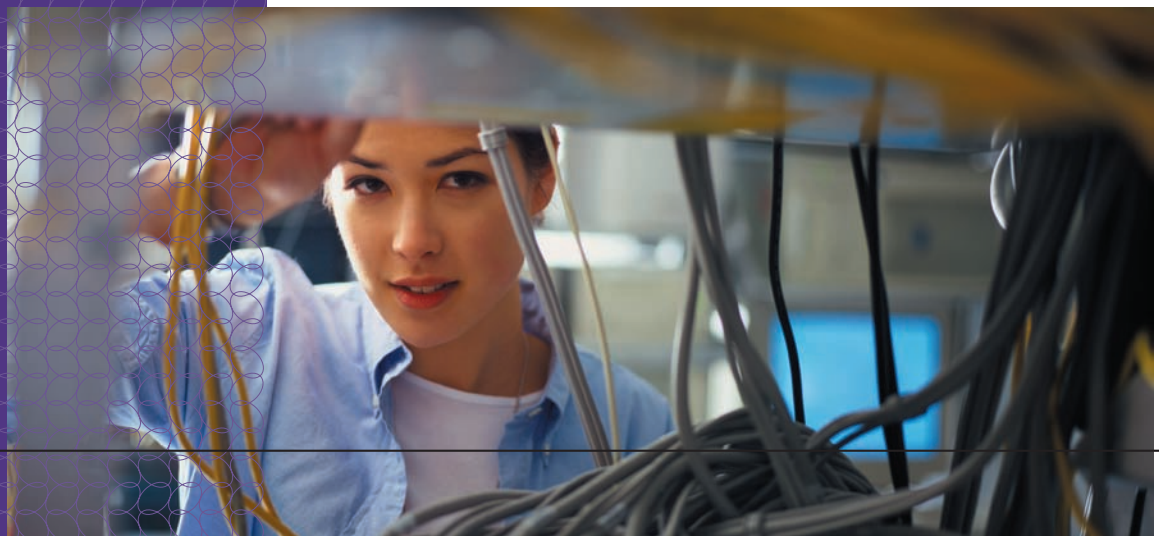


Change Manager, one of the add-on modules to the DCPI Management suite, keeps you on top of frequent physical equipment changes through automatic workflow and inventory management providing a full audit trail. The optional Mobile Data Center Assistant uses barcoding for tracking asset changes on the go, and synchronizes with the centralized database.



Capacity Manager provides predictive simulation and modeling based on real-time data from InfraStruXure Central, coupled with power, cooling and space constraints. Of course, an optimal location for your new equipment will be recommended, as well as instant airflow analysis to avoid heat problems.

While NetBotz® protection keeps you one step ahead of security and environmental hazards, it's only one piece of your overall IT management picture. As you consider more power, cooling, and on-site service solutions, let APC's Global Service team help you enjoy the benefits.



Your Next Steps



Need more information on managing, monitoring, and controlling your network closets remotely? Want to explore APC solutions in greater depth? APC online tools, research guides, and online courses give you all the background you need to make informed decisions and smart investments.



■ **White Paper Podcast #102: Monitoring Physical Threats in the Data Center**

Want to learn more about deploying NetBotz® products in your IT environment to proactively monitor physical threats? Download White Paper Podcast #102: Monitoring Physical Threats in the Data Center at www.apc.com/podcast/wp and get some free professional advice on deploying monitoring devices, and best practices in using the data collected by NetBotz devices. There, you'll also find a downloadable PDF version of the podcast with complete text, graphics, and citations.



■ **Application Note #93: Security Features of APC's NetBotz Appliances**

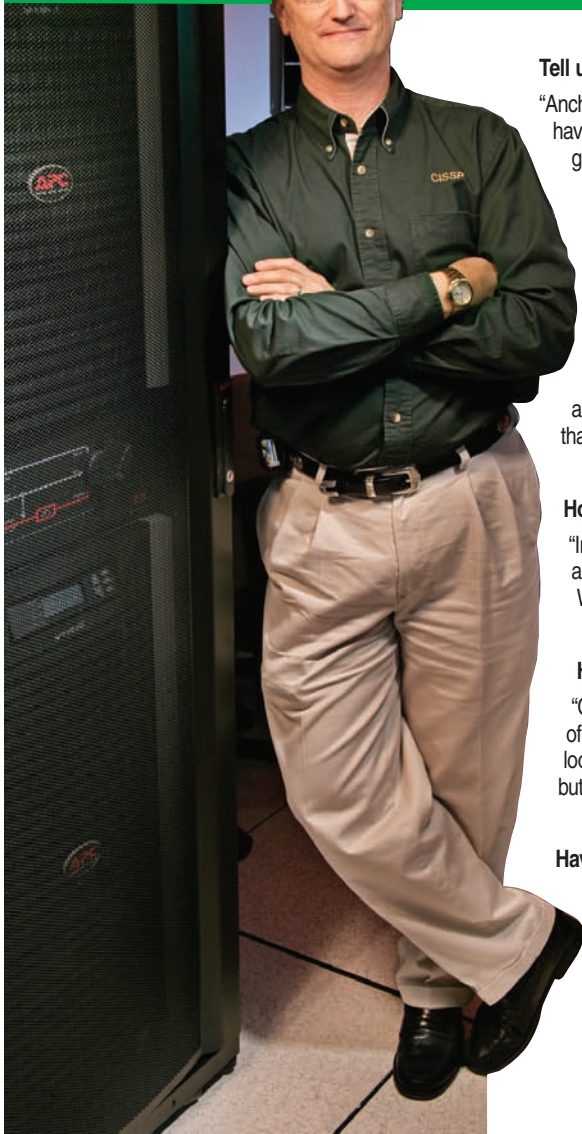
Many customers have questions concerning the safety and privacy of the data collected by NetBotz devices. Application Note #93: Security Features of APC's NetBotz Appliances outlines the features that keep your information confidential and secure. Download the application note via the Security and Environmental Monitoring product page at www.apc.com



■ **Application Note #105: Monitoring Third-Party Devices with APC NetBotz Appliances and InfraStruXure® Central**

A wide variety of NetBotz-branded and supported third-party options are available to enhance the functionality of your NetBotz appliances. To learn more about this additional level of expandability, download the application note via the Security and Environmental Monitoring product page at www.apc.com

Anchor Glass Container Corp



Tell us about your business in general and describe your environment in particular.

"Anchor Glass Container Corporation is the third-largest manufacturer of glass containers in the United States. We have eight strategically located facilities where we produce a diverse line of clear, amber, green, and other colored glass containers mainly for the food and beverage industry for jelly, tea, fruit drinks, and other beverages. We deliver empty glass containers to our customers' production lines to be filled.

What specific technology problems were you facing?

"The company had just moved to a new location, but in a building where power is unreliable and where we are not the priority for the building owners.

"We were running an older APC unit whose batteries needed replacing, but we also needed to increase our runtime. So we used the company move as an opportunity for an upgrade to an InfraStruXure® on-demand architecture for power, rack, and air, with a NetBotz® monitoring solution. The deciding factor in the purchase was that we knew we could trust APC from our history with the company.

How did APC help resolve the power and environmental issues you were facing?

"InfraStruXure and NetBotz are now protecting, cooling, and monitoring our IBM AS400, Win Servers, firewalls, and communications. Our power is corrected and we have enough runtime to finish an emergency data backup. With meteorologists calling for increasing hurricane activity, this will prove very beneficial over time.

How is NetBotz contributing to the day-to-day operations of your business?

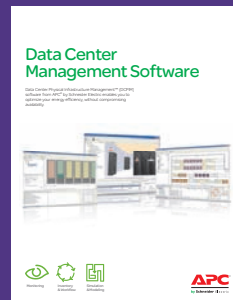
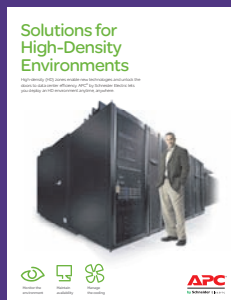
"Our NetBotz monitoring gives us the peace of mind of having a complete monitoring picture and understanding of our data center environment. In fact, because our NetBotz is sending us frequent temperature warnings, we are looking into adding a new cooling unit for the raised floor. We currently have building cooling and a secondary unit, but it is obviously not doing all we need.

Have you found APC customer service to be helpful?

"APC techs are always very helpful, even on the older systems, and are able to help isolate problems. For example, they helped me reset our ten-year-old system without losing power, even though it was no longer under maintenance contract. To me, that's a sign of a company committed to helping us succeed. And that's why as our data center needs evolve, APC will be our first choice."

—Dennis W. Grow
Manager MIS Technical Service
Anchor Glass Container Corp

For more information log on to www.apc.com



Schneider
 **Electric**